

# SEM MG

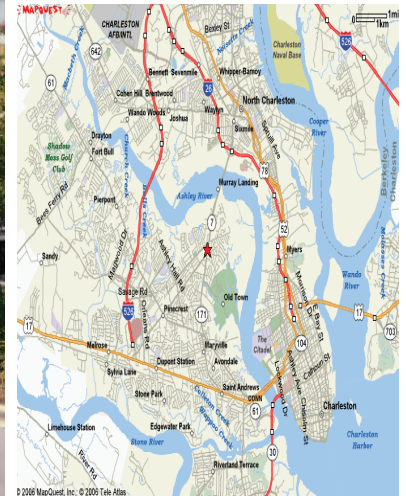
BUY. MANAGE. SELL.

S O U T H E A S T E R N M A N A G E M E N T G R O U P



presents:

## NORTHBRIDGE EXECUTIVE PARK



NORTHBRIDGE EXECUTIVE PARK - 1180 SAM RITTENBERG BLVD.

### OFFICE FOR LEASE

▲ <u>Suite 100</u>	8,582 RSF	\$21 prsf	\$15,018.50 per month
▲ <u>Suite 325</u>	3,648 RSF	\$21 prsf	\$ 6,384.00 per month
▲ <u>Suite 325a</u>	1,824 RSF	\$21 prsf	\$ 3,192.00 per month

- ▲ Conveniently located close to I-26
- ▲ Gross Rate. Full-Service Lease. No additional CAM charges
- ▲ All Utilities included
- ▲ Daily janitorial included at no additional cost
- ▲ Large conference room available to all tenants in building

contact:

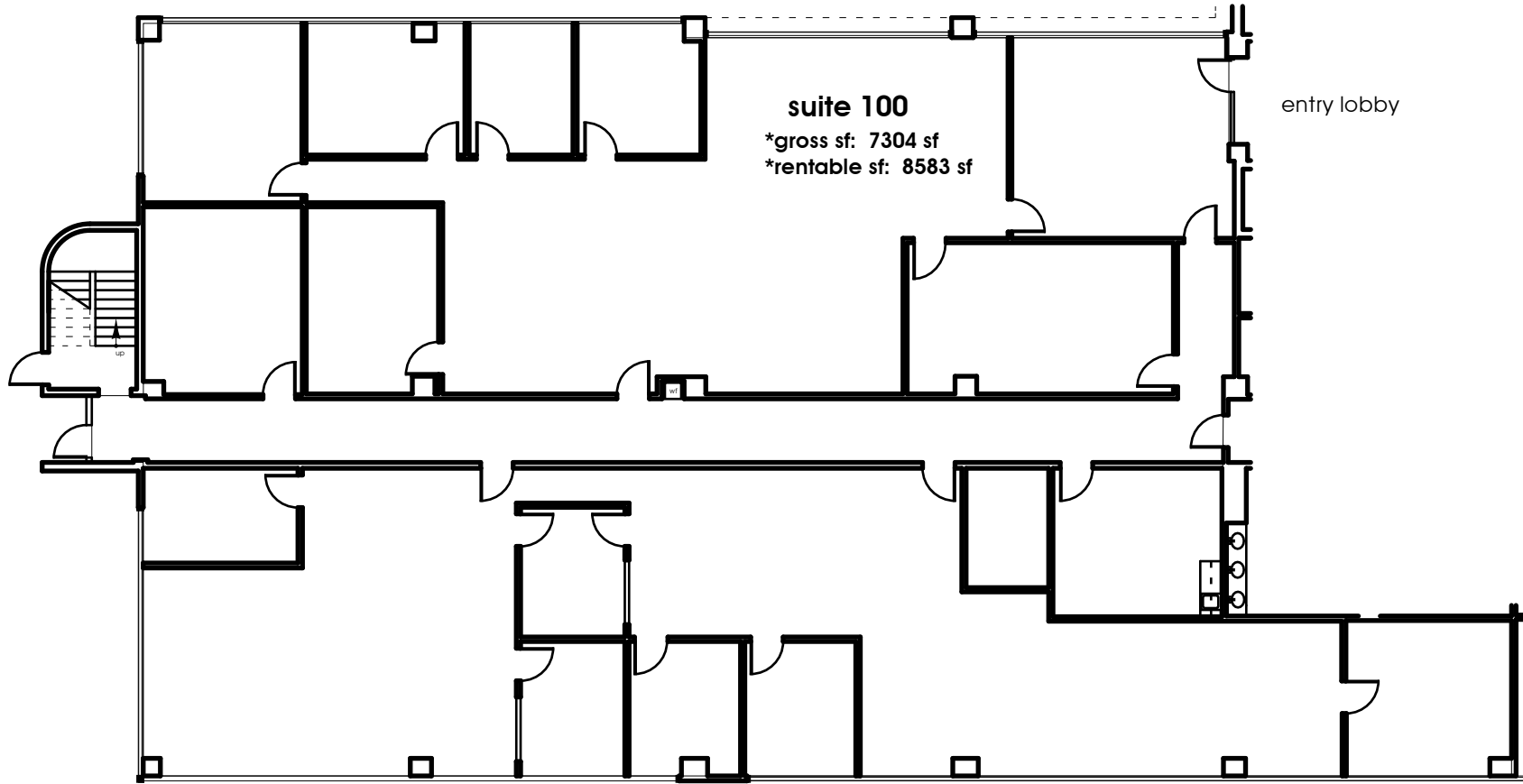
Chad Yonce, CCIM, CPM  
843.577.8595 x12  
yonce@semgsc.com

Bryan Perrucci, CCIM  
843.577.8595 x15  
perrucci@semgsc.com

151 King Street  
Charleston, SC 29401  
www.semgsc.com

all drawings property of prescon architectural design, l.l.c. duplication without the express authorization of prescon architectural design, l.l.c. is forbidden

**PRESCON** LLC  
architectural design



suite 100  
first floor: 1/16"=1'-0"



538 KING STREET  
CHARLESTON, S.C.  
29403

843-577-7030 phone  
843-577-8040 fax

Record Drawings for  
**NORTHBRIDGE EXEC.**  
CHARLESTON, SC

RECORD DOCUMENTS

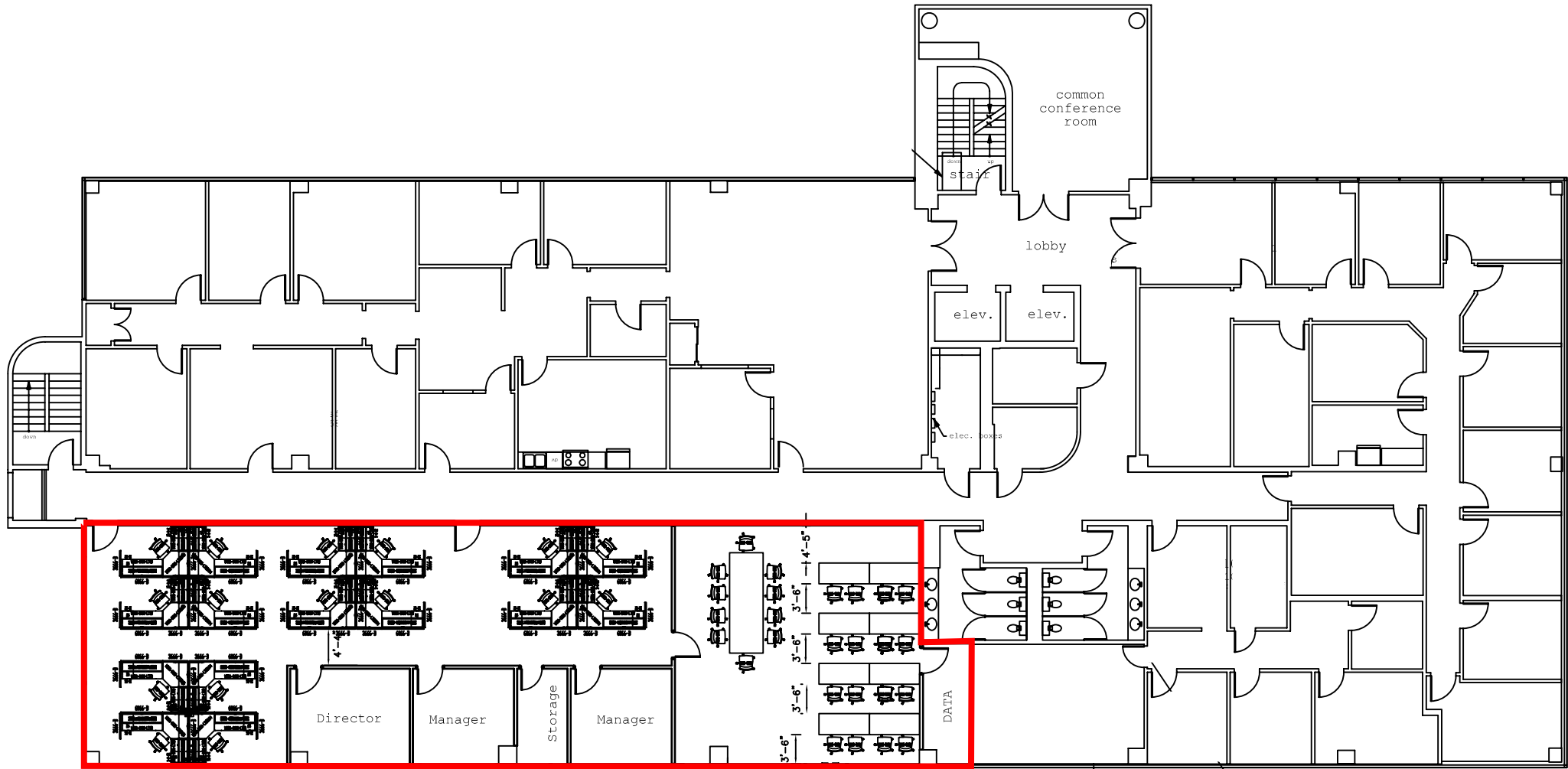
D E S I G N E D  
a k j / k e b  
D R A W N  
a k j  
C H E C K E D  
a k j

D A T E  
11-10-2005  
R E V I S I O N S

S H E E T

**A3.1**

TENANT SPACES



third floor plan. . . .