



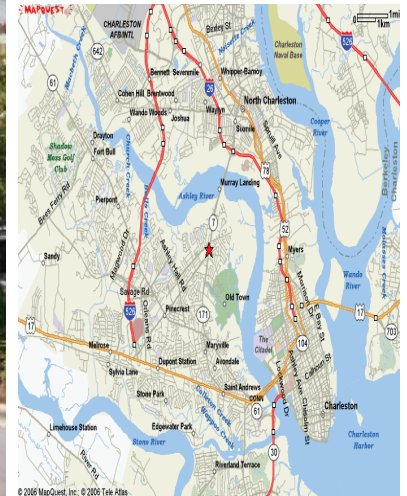
BUY. MANAGE. SELL.

S O U T H E A S T E R N M A N A G E M E N T G R O U P



presents:

NORTHBRIDGE EXECUTIVE PARK



NORTHBRIDGE EXECUTIVE PARK - 1180 SAM RITTENBERG BLVD.

OFFICE FOR LEASE

▲ <u>Suite 100</u>	4,370 RSF	\$21 prsf	\$ 7,647.50 per month
▲ <u>Suite 120</u>	2,230 RSF	\$21 prsf	\$ 3,902.50 per month
▲ <u>Suite 100 & 120</u>	6,600 RSF	\$21 prsf	\$11,550.00 per month
▲ <u>Suite 325</u>	1,130 RSF	\$21 prsf	\$ 1,977.50 per month

- ▲ Conveniently located close to I-26
- ▲ Gross Rate. Full-Service Lease. No additional CAM charges
- ▲ All Utilities included
- ▲ Daily janitorial included at no additional cost
- ▲ Large conference room available to all tenants in building

contact:

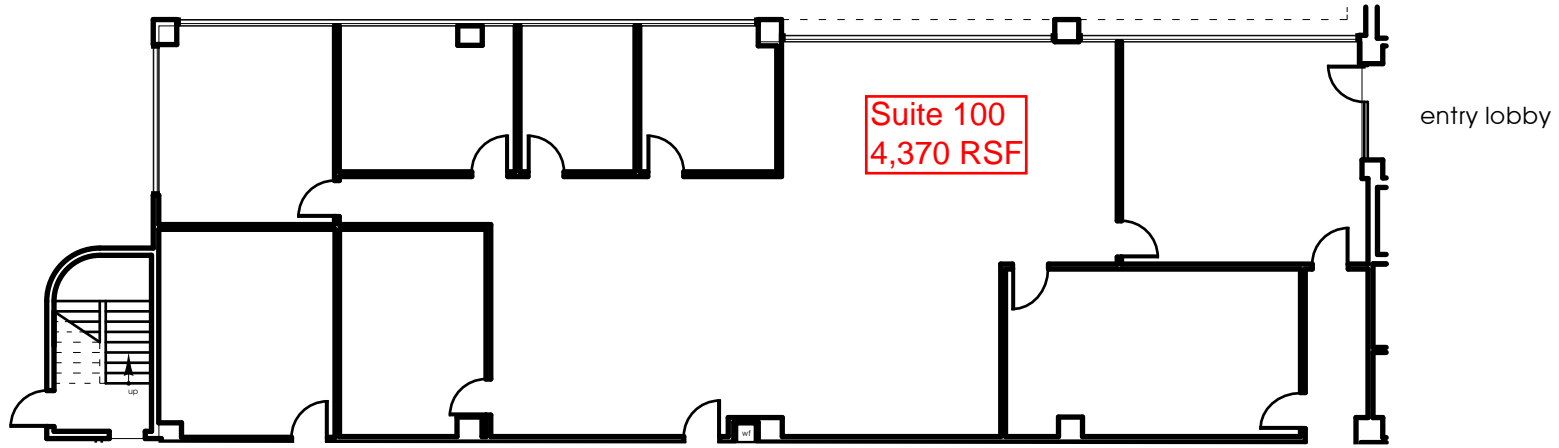
Chad Yonce, CCIM, CPM
843.577.8595 x12
yonce@semgsc.com

Bryan Perrucci, CCIM
843.577.8595 x15
perrucci@semgsc.com

151 King Street
Charleston, SC 29401
www.semgsc.com

all drawings property of prescon architectural design, l.l.c. duplication without the express authorization of prescon architectural design, l.l.c. is forbidden

PRESCON LLC
architectural design



first floor: 1/16"=1'-0"



538 KING STREET
CHARLESTON, S.C.
29403

843-577-7030 phone
843-577-8040 fax

Record Drawings for
NORTHBRIDGE EXEC.
CHARLESTON, SC

RECORD DOCUMENTS

D E S I G N E D
a k j / k e b
D R A W N
a k j
C H E C K E D
a k j

D A T E
11-10-2005
R E V I S I O N S

S H E E T

A3.1

TENANT SPACES

all drawings property of prescon architectural design, l.l.c. duplication without the express authorization of prescon architectural design, l.l.c. is forbidden

PRESCON LLC
architectural design



538 KING STREET
CHARLESTON, S.C.
29403

843-577-7030 phone
843-577-8040 fax

Record Drawings for
NORTHBRIDGE EXEC.
CHARLESTON, SC

RECORD DOCUMENTS

D E S I G N E D

akj/keb

D R A W N

akj

C H E C K E D

akj

D A T E

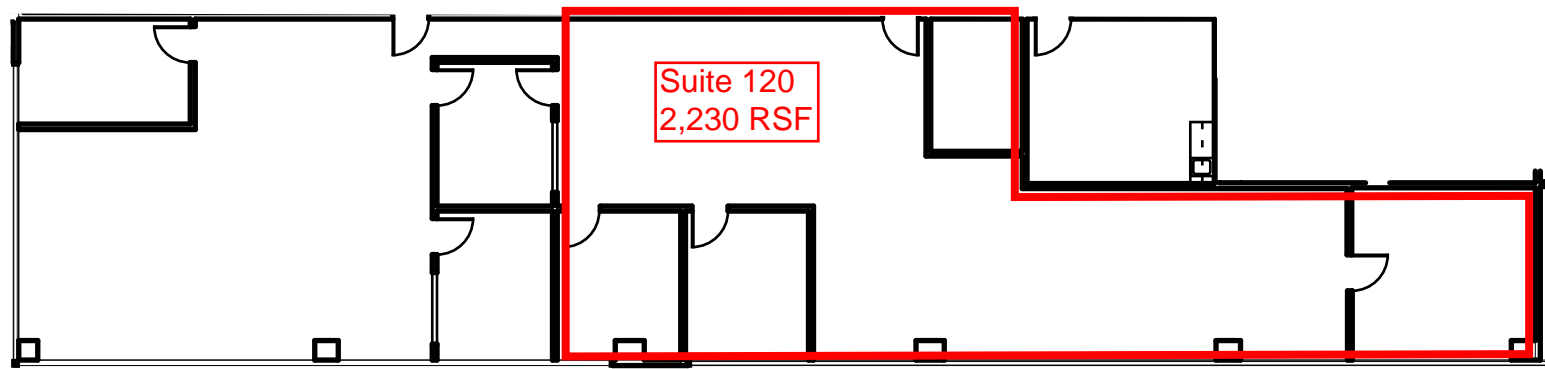
11-10-2005

R E V I S I O N S

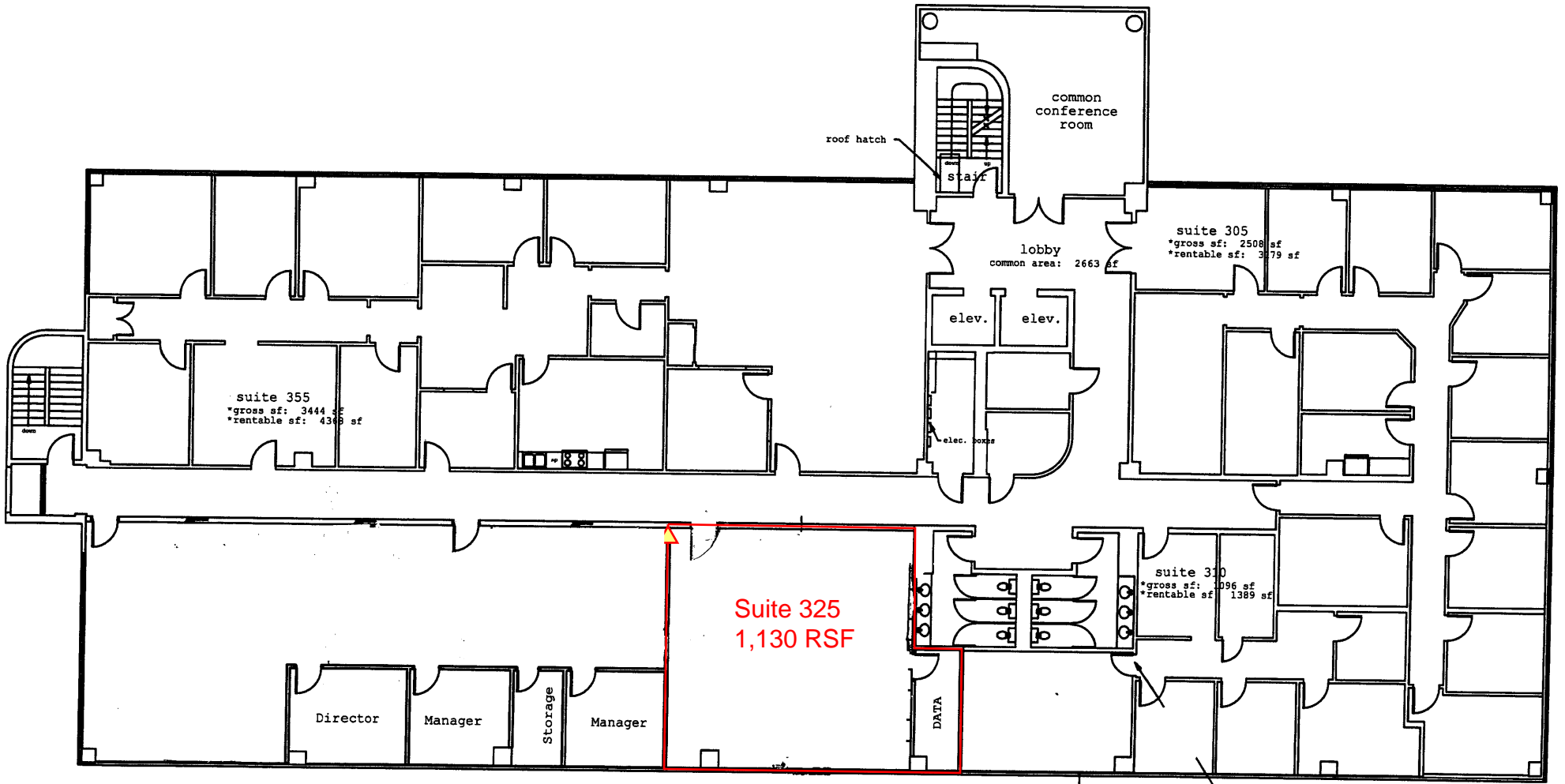
S H E E T

A3.1

TENANT SPACES



first floor: 1/16"=1'-0"



third floor plan