

Single Office For Lease - Great Location in Mt Pleasant

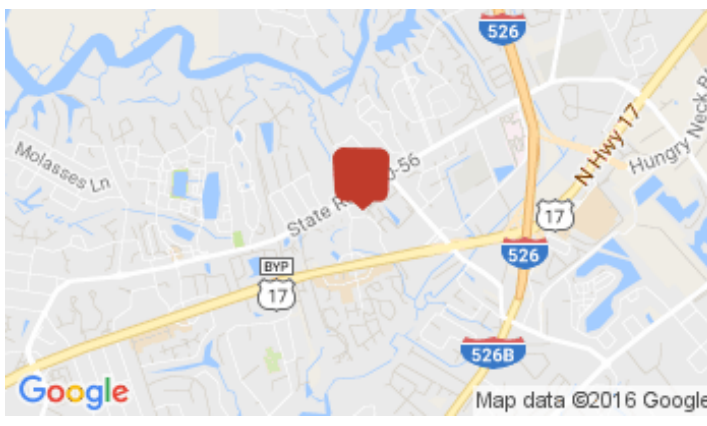
990 Lake Hunter Cir, Mount Pleasant, SC 29464

Listing ID:	29996111
Status:	Active
Property Type:	Office For Lease
Office Type:	Business Park, Executive Suites
Contiguous Space:	332 SF
Total Available:	332 SF
Lease Rate:	\$500 (Monthly) \$18.07 PSF (Annual)
Base Monthly Rent:	\$500
Lease Type:	Modified Gross
Nearest MSA:	Charleston-North Charleston
County:	Charleston
Tax ID/APN:	535-00-00-314
Year Built:	2002



Overview/Comments

Gross Rate with updated Carpet & Paint Throughout!! 1 single office available for lease. Gross Lease Rate with Tenant paying their pro-rata share of utilities (Year 1 Estimated to be \$25.00 / mo.), as well as, Tenant's interior janitorial, phone, & IT. Shared break room & shared bathrooms. The suite is on the 2nd floor accessed via a common stairwell and the office receives lots of natural light & free parking. Excellent, free-standing office building well positioned in the heart of Mt. Pleasant. Please see attached floor plan (Suite 204 is the available unit). Zoned AB - Areawide Business.



More Information Online

<http://catylist.sccmls.com/listing/29996111>

QR Code

Scan this image with your mobile device:

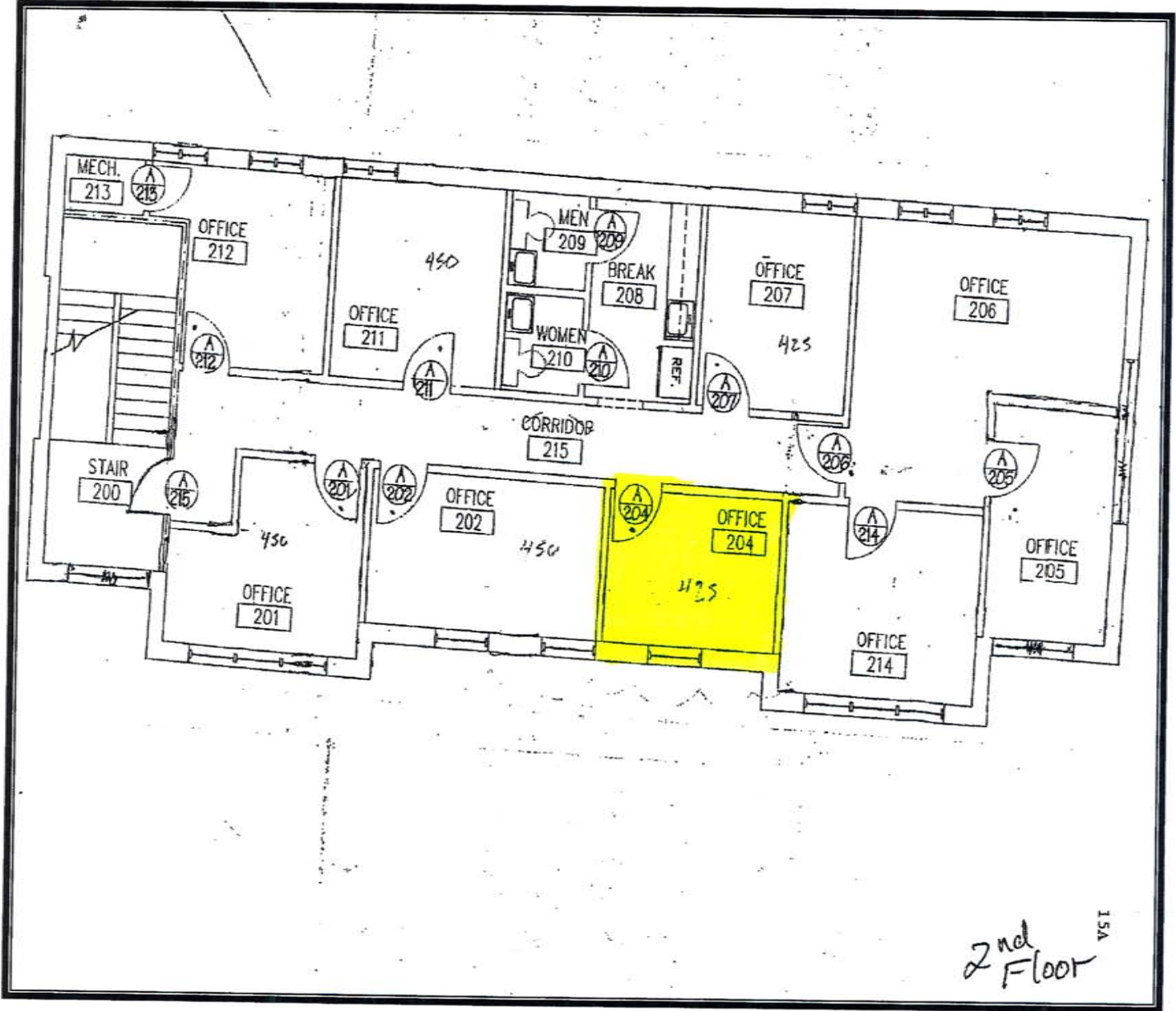


Property Contacts



Chad Yonce

Southeastern Management Group,
843-343-1923 [M]
843-577-8595 [O]
yonce@semgsc.com



2nd Floor^{15A}