



BUY. MANAGE. SELL.

S O U T H E A S T E R N M A N A G E M E N T G R O U P



presents:
[151]
king



151 KING STREET - OFFICE FOR LEASE

3 Story Free-Standing Office Building

▲ Full Floor 1,610 RSF (approx.) \$15.41/SF GROSS Rate \$2,067.51 / mo.

▲ Gross rate. Landlord pays all property taxes, property insurance, streetscape, user fees, and exterior maintenance.

▲ Tenant is responsible for its pro-rata share of all utilities, janitorial, phone, & internet.

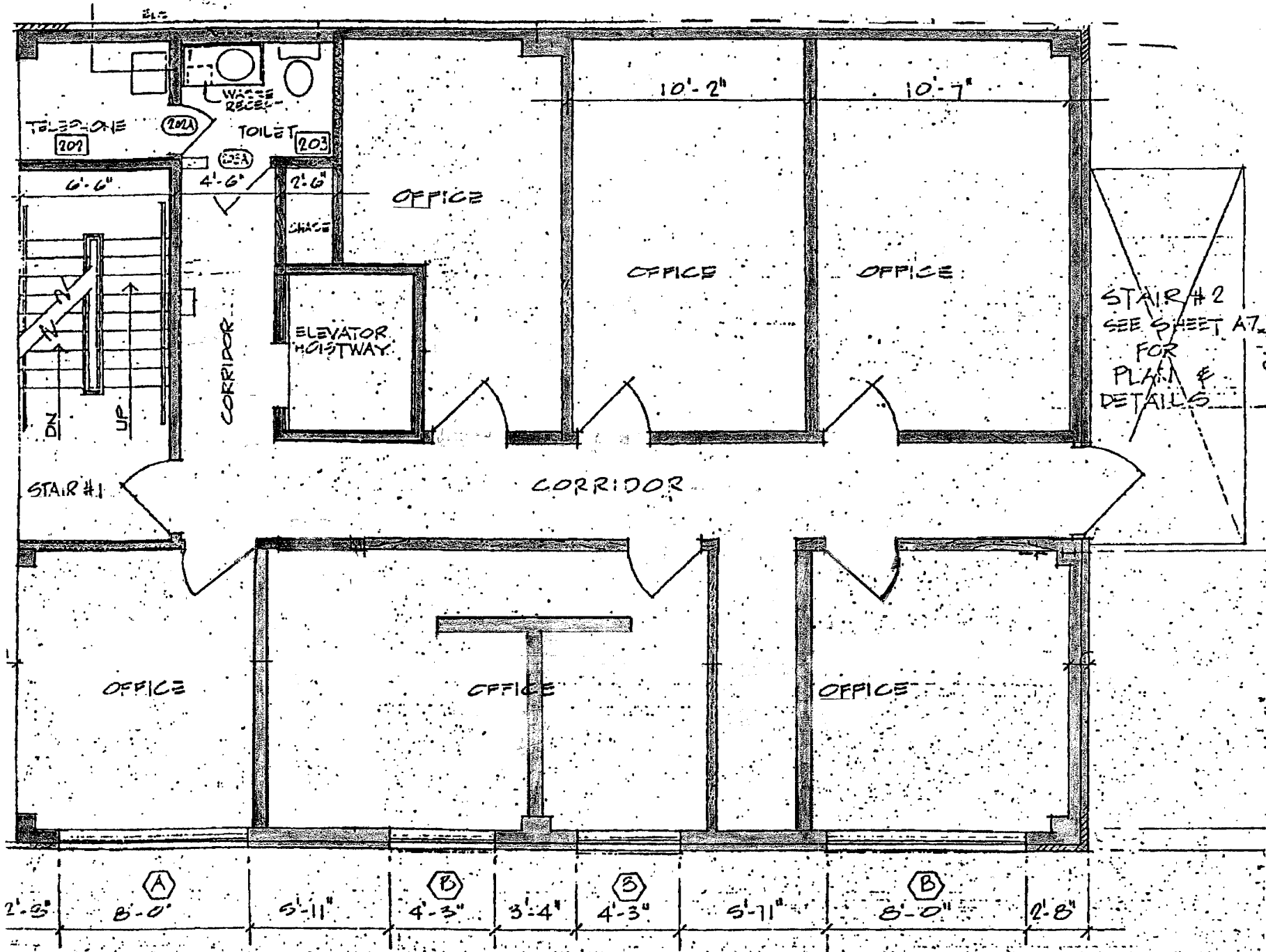
▲ Up to 6 parking spaces on-site. Available for \$250 per row (2 vehicles per row).

contact:

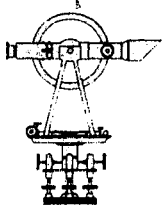
Chad Yonce, CCIM, CPM
843.577.8595 x12
yonce@semgsc.com

Bryan Perrucci, CCIM
843.577.8595 x15
perrucci@semgsc.com

151 King Street
Charleston, SC 29401
www.semgsc.com



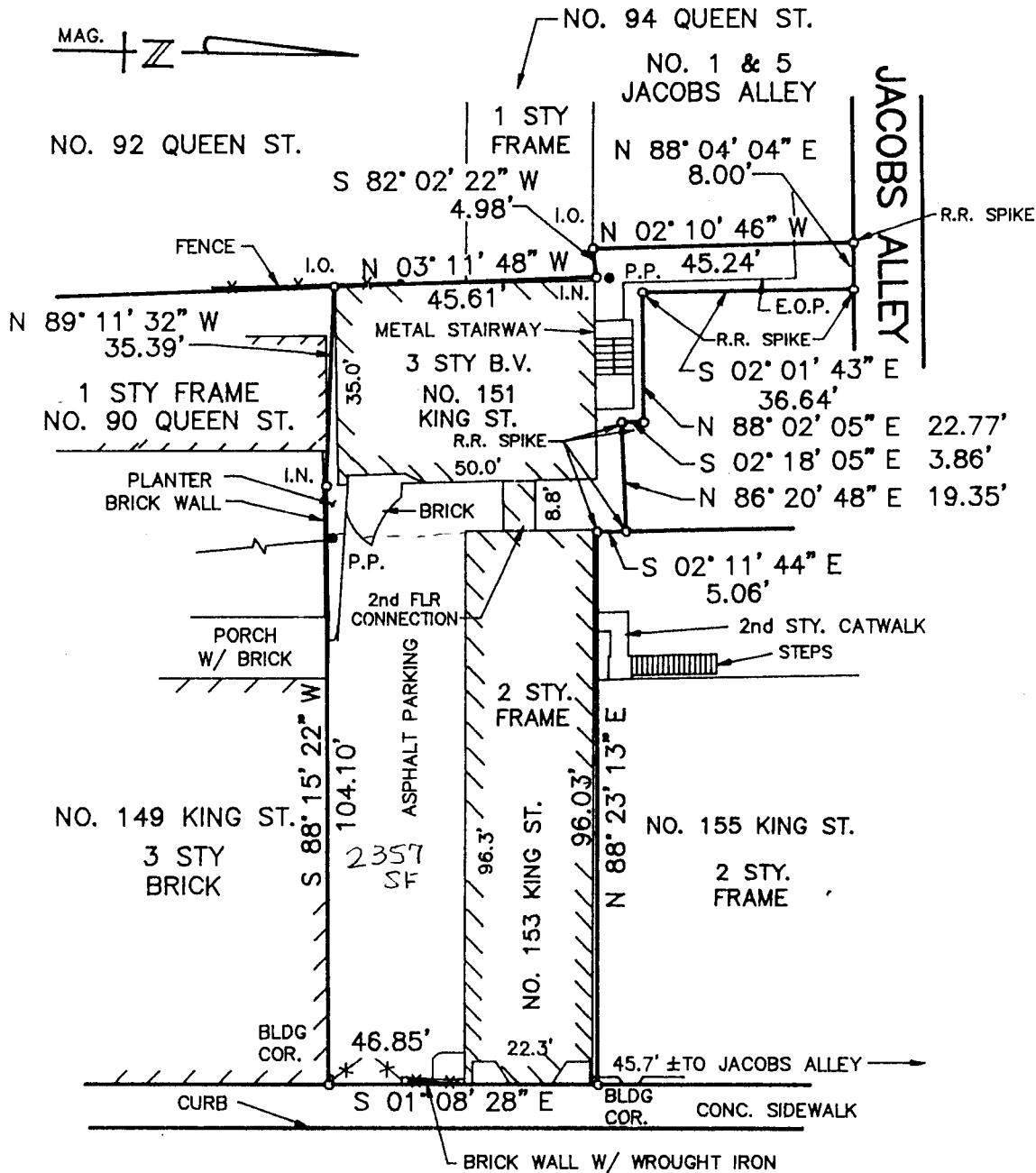
3 SECOND FLOOR PLAN



GEORGE A. Z. JOHNSON, JR., INC.

Land Surveyors • Planners

207 Calhoun St. Charleston, SC 29403 803-722-3892



KING STREET R/W VARIES

(45.7' B/S TO B/S)

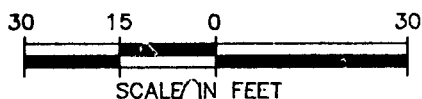
PLAT OF LOT
 NO.s 151 & 153 KING ST
 CITY OF CHARLESTON
 CHARLESTON COUNTY
 SOUTH CAROLINA

- REFERENCE:
1. PLAT BY SIGMA ENGINEERS, INC.
 RECORDED DATE FEB. 18, 1975
 PLAT BOOK AE PAGE 73
 RMC CHARLESTON COUNTY
 2. PLAT BY GEORGE A.Z. JOHNSON, JR., INC
 DATE: AUGUST 23, 1984
 PLAT BOOK BB, PAGE 134
 RMC CHARLESTON COUNTY

OWNER:
 M-F-B REALTY CO.,
 A PARTNERSHIP

THIS PROPERTY IS LOCATED IN A SPECIAL FLOOD HAZARD AREA AS PER HUD/FIA FLOOD MAPS.
 THE BEARINGS SHOWN HEREON ARE MAGNETIC AND AS SUCH ARE SUBJECT TO LOCAL ATTRACTION.

J.B. 10115B1 F.B. 588 M.M.E.
 DATE: 09-14-89 SCALE: 1"=30'



I hereby certify, to owners(s) shown hereon that to the best of my knowledge and belief, the measurements as shown above are correct and that there are no encroachments or projections other than as shown, and that the easements shown are those that are obvious and apparent.

F. Steven Johnson, R.L.S.
 S.C. Registration Number 10038