

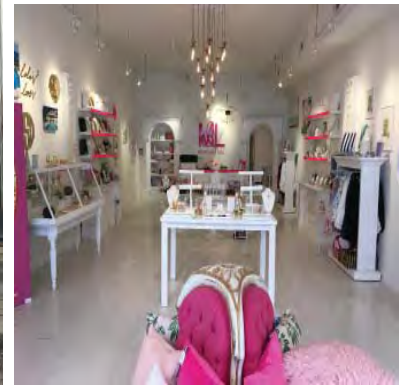
# SEM MG

BUY. MANAGE. SELL.

S O U T H E A S T E R N M A N A G E M E N T G R O U P

presents:

322  
KING



## 322 - 324 KING STREET

▲ 1,525 sf	Rent	\$72.00 psf	\$ 9,150.00/mo
	NNN	\$11.46 psf	<u>\$ 1,456.40/mo</u>
		Total	\$10,606.40/mo

▲ Join Pottery Barn, William Sonoma, Jos A Banks, Apple iStore, & Grady Ervin in this dynamic block in the very heart of the King Street Shopping District

contact:

Chad Yonce, CCIM, CPM  
843.577.8595 x 12  
yonce@semgsc.com

151 King Street  
Charleston, SC 29401

[www.semgs.com](http://www.semgs.com)

